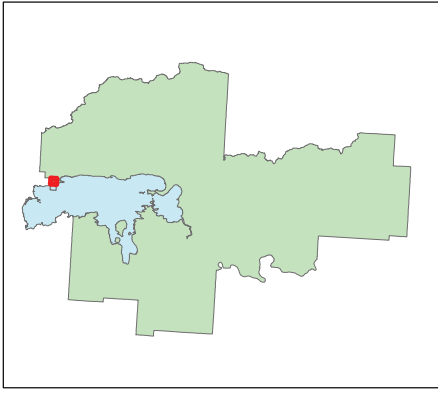


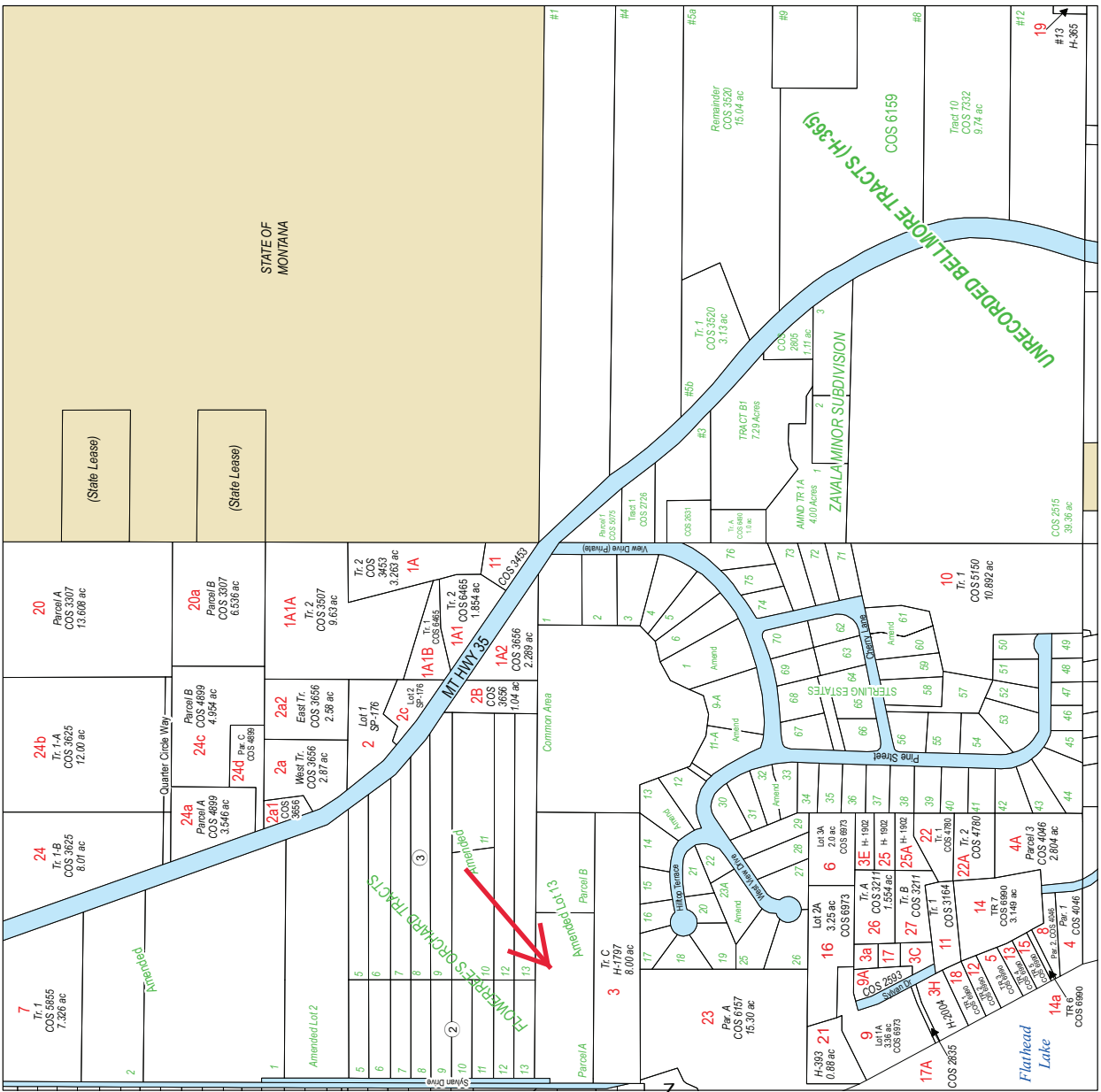
# Lake County Section Map

## T26N R19W, Sec 18



**Legend**

- Private
- Plum Creek
- Utilities
- Federal
- State
- Local Govn
- Tribal
- Water



Lake County GIS - WF  
July 21, 2021

0 550 1,100 2,200 Feet

**DISCLAIMER:** The data displayed on this map do not constitute a legal survey. Inaccuracies exist with both the mapped parcel data and the CAMA data. When seeking the definitive description of real property, consult the deed recorded at the local county courthouse.

Sources: The parcel data was primarily developed by the Montana Cadastral Database Project. It comes from a variety of sources including automated GIS data, aerial photography, and other sources. The data is presented on paper on Mylar maps, and coordinate geometry capture of certificates of survey and deeds. For more information see the FGDC compliant metadata on the web (gis.do.state.mt.us). Road, hydro and rail data is from the U.S. Census Bureau 1:100,000 TIGER files unless otherwise noted. County boundary, if any, is based on the Bureau of Land Management's GCOB files where coincident with a parcel boundary or on the TIGER files where not coincident.