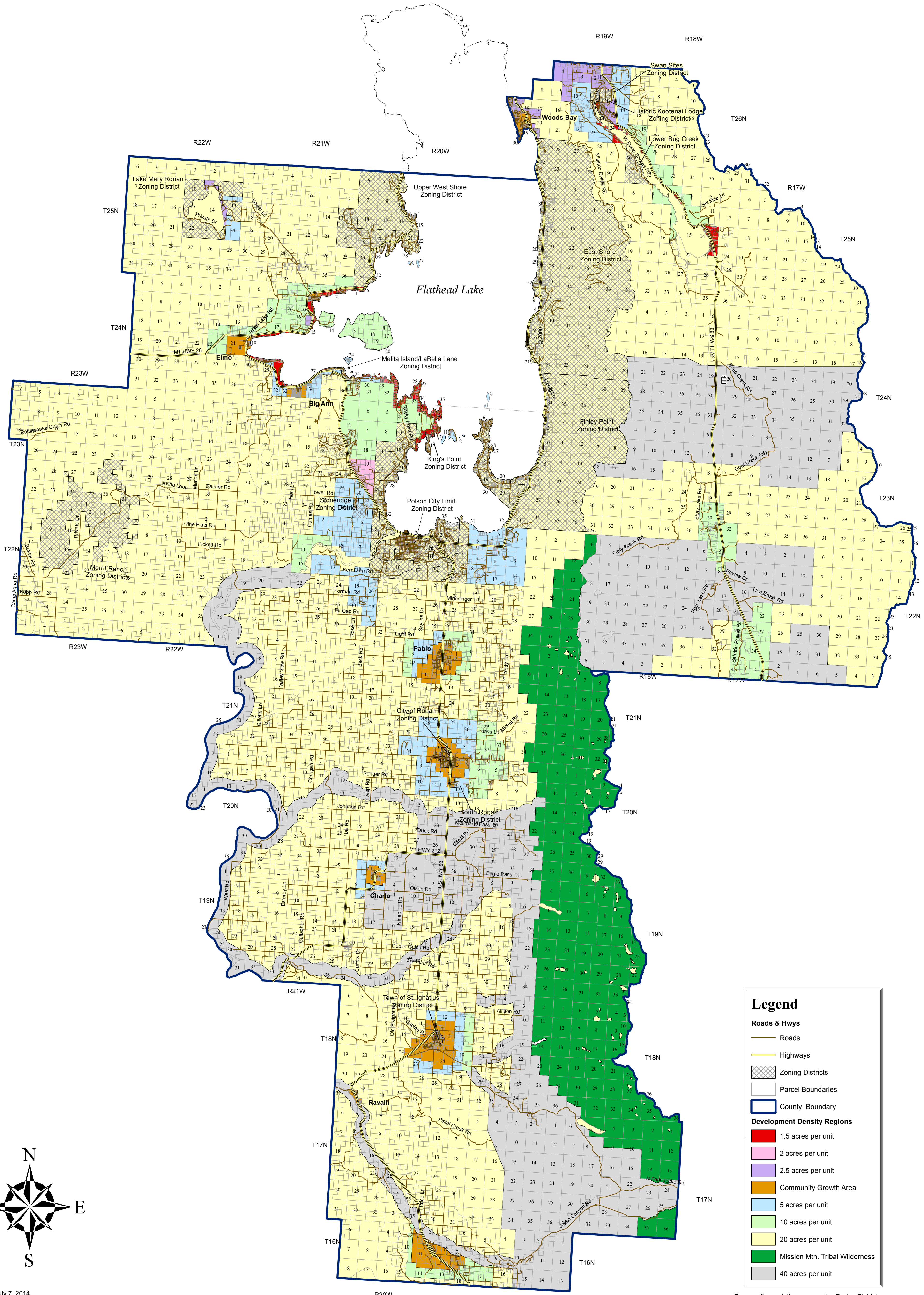


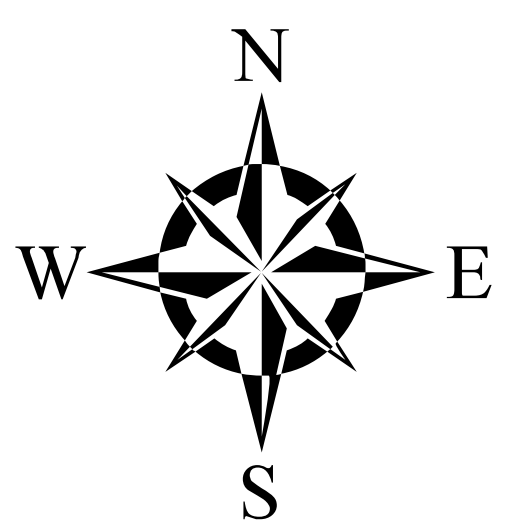
# Lake County Density Map



**Legend**

- Roads & Hwys**
  - Roads
  - Highways
- Zoning Districts
- Parcel Boundaries
- County Boundary
- Development Density Regions**
  - 1.5 acres per unit
  - 2 acres per unit
  - 2.5 acres per unit
  - Community Growth Area
  - 5 acres per unit
  - 10 acres per unit
  - 20 acres per unit
  - Mission Mtn. Tribal Wilderness
  - 40 acres per unit

For specific regulations concerning Zoning Districts or Development Density Regions please contact the Lake County Planning Department



Cite:  
 Updated July 7, 2014  
 Coordinates: NAD 1983 State Plane Montana FIPS 2500 (Meter)  
 Projection: Lambert Conformal Conic  
 Map Extent: 1: 151,000  
 Originating Organization: Lake County Department of GIS  
 Author: Unknown  
 Phone: (406) 883-7212  
 Email: wfahner@lakemt.gov

The Lake County GIS makes no warranty expressed or implied, including the fitness for a particular purpose, or assumes any legal liability or responsibility for the accuracy, completeness, or usefulness of any information, apparatus, product, or process disclosed, or represents that its use would infringe privately owned rights.



Effective: October 1, 2005 (Resolution 05 - 38)  
 Amended: August 21, 2007 (Resolution 07 - 29)