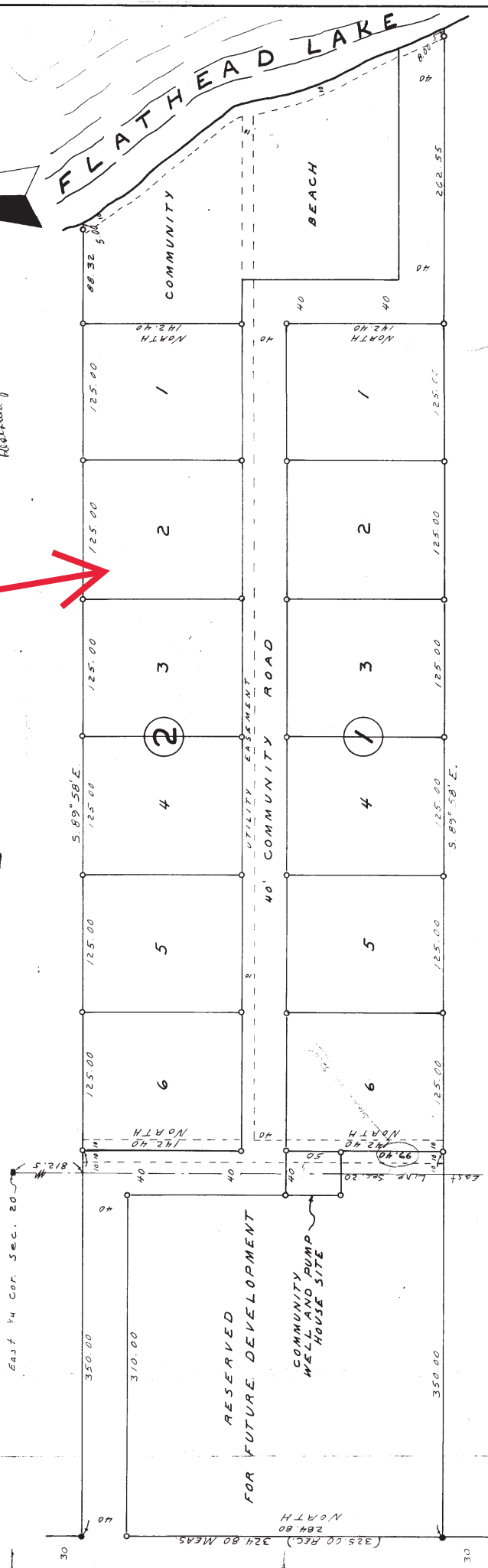


# MOUNTAIN VIEW TERRACE

A SUBDIVISION OF LOTS 6 AND 7 <sup>Block 1 of</sup> MOUNTAIN VIEW VILLA SITE, LOCATED IN THE N.E. 1/4 S.E. 1/4 SECTION 20 AND FRACTIONAL LOT 5 SECTION 21, T. 23 N., R. 20 W., M.P.M. LAKE COUNTY OF LAKE, MONTANA

- DENOTES IRON PIPE (SET)
- DENOTES IRON PIPE (FOUND)



# 218874 9-19-74  
Amendment Rest. Covenants

SCALE 1" = 60'

Restored to # 9-3-71  
Covenants # 100 003  
per 2-12-2008. Future Resubdivision  
Approved for Future Resubdivision

## DEDICATION AND OWNERS CERTIFICATION

Know all men by these presents, that we, the undersigned hereby certify that we are the owners of the land included within the boundaries of the subdivision shown on this map, said land being portions of the N.E. 1/4, S.E. 1/4 section 20 and Fractional Lot 5 section 21 T. 23 N., R. 20 W., M.P.M. Lake County, Montana and being more particularly described as follows:

All of lots 6 and 7 block No. 1 of Mountain View Villa Site as shown on the recorded plat of said Mountain View Villa Site being housed in the Official records of the County of Lake, Montana; and that we hereby dedicate to the operating utilities companies, easements as shown on said map within said subdivision and that we hereby consent to the preparation and recotation of said map and subdivision and we do hereby designate the same as MOUNTAIN VIEW TERRACE.

Ellis E. Parker  
ELLIS E. PARKER

Grace M. Parker  
GRACE M. PARKER

Comment on Plat # 167765  
11/16/64

State of Montana, ss  
County of Lake  
I, Richard D. Henry, Notary Public,  
do hereby certify that the foregoing instrument was acknowledged before me, this 24th day of September, 1964 by Ellis E. Parker and Grace M. Parker as owners.

Witness my hand and official seal, my commission expires December 6, 1966



REGISTERED LAND SURVEYOR  
HARRY R. MEDLAND  
POLSON, MONT.

Filed on the 16th day of July,  
A.D. 1964 at 10:27 o'clock AM  
HARRY R. MEDLAND  
County Clerk and Recorder  
Polson, Montana

## APPROVALS

Approved by Montana State Board of Health this \_\_\_ day of \_\_\_\_\_ 1964  
AHEST Director

Approved by Lake County Surveyor this 16th day of November 1964  
Acting Lake County Surveyor  
A. D. Bouton

Approved by Lake County Board of Commissioners this 16th day of Nov. 1964  
Chairman  
W. M. H. H. H. H. H.  
AHEST County Clerk

Richard P. Heinz, County Attorney in and for the County of Lake, Montana, do hereby certify that I have examined the abstract of title of the land described on this map as Mountain View Terrace and that Ellis E. Parker and Grace M. Parker are the owners in fee simple of said lands. Dated this 16th day of November 1964  
Richard P. Heinz  
Lake County Attorney

## SURVEYORS CERTIFICATE

I, Harry R. Medland, hereby certify that I am a registered land surveyor under the laws of the State of Montana, that this map is a true representation of a survey made by me in September, 1964 and the monuments of the character and location shown actually exist and that said monuments are sufficient to enable the survey to be readily retraced.

Harry R. Medland  
A.L.S. 22295